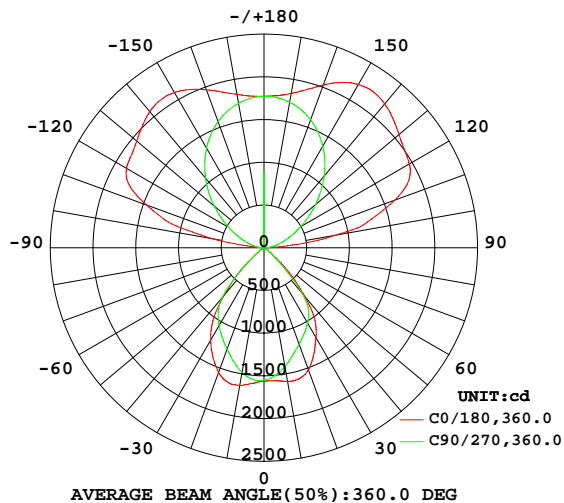


## LUMINAIRE PHOTOMETRIC TEST REPORT

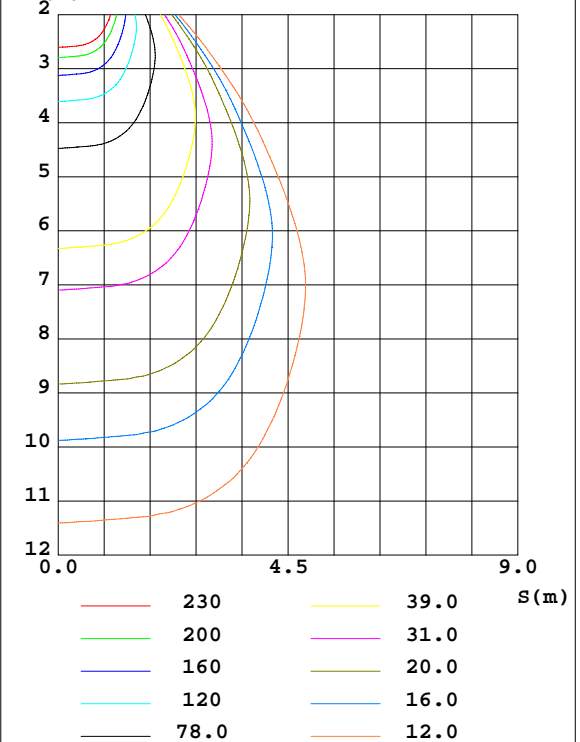
Test:U:229.62V I:0.3546A P:79.622W PF:0.9778 Freq:49.99Hz Lamp Flux:9563.58x1 lm		
NAME:	TYPE:	WEIGHT:
SPEC.:	DIM.: 1203*52*31	SERIAL No.:
MFR.:	SUR.:0.8*0.042	Shielding Angle:

DATA OF LAMP		PHOTOMETRIC DATA Eff: 120.11 lm/W			
MODEL		Imax(cd)	2232	S/MH(C0/180)	1.13
NOMINAL POWER(W)	80	LOR(%)	100.0	S/MH(C90/270)	1.04
RATED VOLTAGE(V)	230.0	TOTAL FLUX(lm)	9563.6	$\eta$ UP,DN(C0-180)	39.3,10.9
NOMINAL FLUX(lm)	9563.58	CIE CLASS	SEMI-IND.	$\eta$ UP,DN(C180-360)	38.4,11.4
LAMPS INSIDE	1	$\eta$ up(%)	77.7	CIBSE SHR NOM	1.00
TEST VOLTAGE(V)	230.0	$\eta$ down(%)	22.3	CIBSE SHR MAX	1.15

LUMINOUS INTENSITY DISTRIBUTION DIAGRAM



C0 PLANE ISOLUX DIAGRAM (UNIT:lx)



C Range: 0 - 360DEG  
C Interval: 5.0DEG  
Test Speed: MEDIUM  
Temperature:25.3DEG  
Operators:  
Test Date:2025-04-02

$\gamma$  Range: 0 - 180DEG  
 $\gamma$  Interval: 0.5DEG  
Test System:EVERFINE GO-2000\_V1 SYSTEM V2.0.406.10  
Humidity:65.0%  
Test Distance:11.700m [K=0.8547]  
Remarks:

## ZONAL FLUX DIAGRAM

## ZONAL FLUX DIAGRAM:

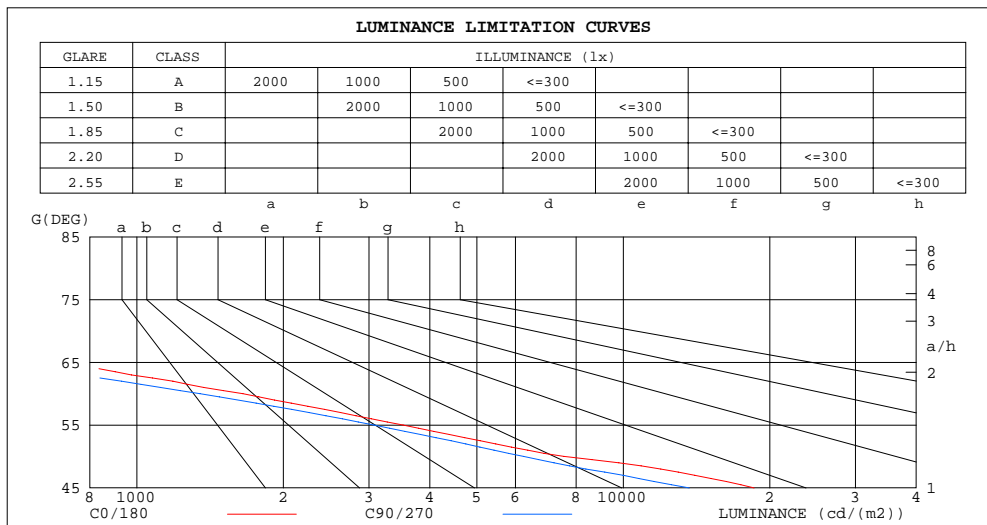
$\gamma$	C0	C45	C90	C135	C180	C225	C270	C315	$\gamma$	$\Phi$ zone	$\Phi$ total	$\%lum, lamp$
10	1587	1494	1412	1504	1635	1575	1483	1529	0- 10	147.0	147.0	1.54,1.54
20	1520	1348	1203	1333	1554	1429	1262	1391	10- 20	412.7	559.7	5.85,5.85
30	1217	1106	1022	1101	1249	1164	1052	1128	20- 30	577.2	1137	11.9,11.9
40	741.1	701.6	700.9	707.5	726.6	755.5	764.7	760.7	30- 40	599.8	1737	18.2,18.2
50	163.2	157.4	134.7	154.7	158.6	175.3	150.0	172.6	40- 50	316.6	2053	21.5,21.5
60	27.75	33.82	22.64	32.23	23.25	34.10	23.99	35.56	50- 60	68.25	2122	22.2,22.2
70	2.774	3.438	1.691	2.891	1.899	3.020	2.032	3.639	60- 70	11.26	2133	22.3,22.3
80	1.503	1.167	0.1117	0.5141	2.474	0.3265	0.1633	0.4553	70- 80	1.156	2134	22.3,22.3
90	2.208	3.325	10.44	3.316	0.8935	0.4296	0.2921	0.9708	80- 90	1.388	2135	22.3,22.3
100	847.2	904.4	111.1	823.1	608.7	763.0	103.9	871.5	90-100	283.2	2419	25.3,25.3
110	1626	1264	270.4	1189	1462	1104	256.8	1230	100-110	872.3	3291	34.4,34.4
120	1965	1545	498.5	1463	1858	1390	476.9	1513	110-120	1169	4459	46.6,46.6
130	2064	1760	787.8	1685	1945	1615	760.2	1735	120-130	1261	5721	59.8,59.8
140	2199	1854	1096	1792	2080	1731	1065	1841	130-140	1244	6965	72.8,72.8
150	2209	1843	1376	1813	2098	1765	1345	1839	140-150	1096	8060	84.3,84.3
160	2027	1803	1594	1795	1968	1766	1571	1797	150-160	828.7	8889	92.9,92.9
170	1835	1781	1731	1777	1824	1766	1718	1777	160-170	505.3	9394	98.2,98.2
180	1773	1773	1773	1773	1773	1773	1773	1773	170-180	169.3	9564	100,100
DEG	LUMINOUS INTENSITY:cd									UNIT:lm		

C Range: 0 - 360DEG  
C Interval: 5.0DEG  
Test Speed: MEDIUM  
Temperature:25.3DEG  
Operators:  
Test Date:2025-04-02

$\gamma$  Range: 0 - 180DEG  
 $\gamma$  Interval: 0.5DEG  
 $\gamma$  Test System:EVERFINE GO-2000\_V1 SYSTEM V2.0.406.10  
Humidity:65.0%  
Test Distance:11.700m [K=0.8547]  
Remarks:

## LUMINANCE LIMITATION CURVES

Test:U:229.62V I:0.3546A P:79.622W PF:0.9778 Freq:49.99Hz Lamp Flux:9563.58x1 lm		
NAME:	TYPE:	WEIGHT:
SPEC.:	DIM.: 1203*52*31	SERIAL No.:
MFR.:	SUR.:0.8*0.042	Shielding Angle:



LUMINANCE cd/(m2)		
G(DEG)	C0/180	C90/270
85	648	36
80	258	19
75	116	16
70	241	147
65	657	478
60	1652	1348
55	3525	3072
50	7555	6236
45	18571	13667

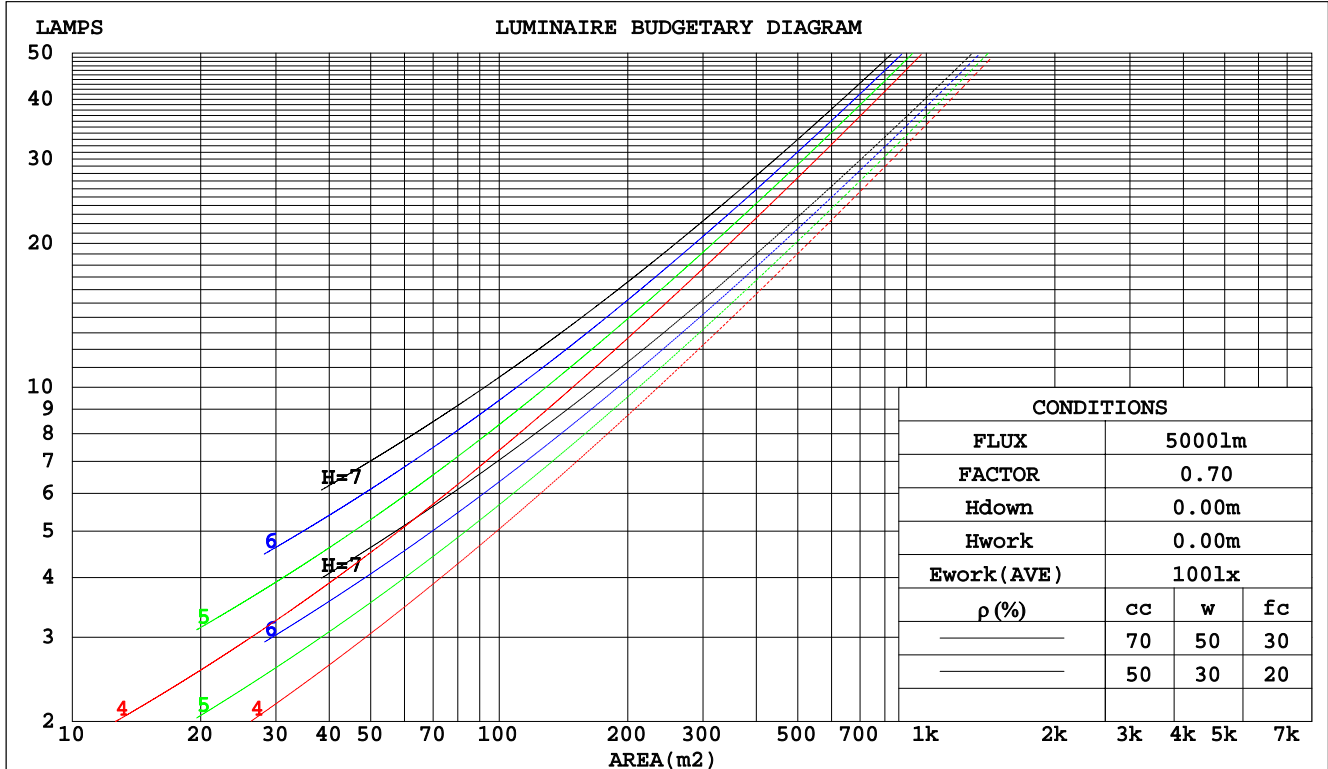
C Range: 0 - 360DEG  
C Interval: 5.0DEG  
Test Speed: MEDIUM  
Temperature:25.3DEG  
Operators:  
Test Date:2025-04-02

$\gamma$  Range: 0 - 180DEG  
 $\gamma$  Interval: 0.5DEG  
Test System:EVERFINE GO-2000\_V1 SYSTEM V2.0.406.10  
Humidity:65.0%  
Test Distance:11.700m [K=0.8547]  
Remarks:

## CU AND LUMINAIRE BUDGETARY ESTIMATE DIAGRAM

Test:U:229.62V I:0.3546A P:79.622W PF:0.9778 Freq:49.99Hz Lamp Flux:9563.58x1 lm		
NAME:	TYPE:	WEIGHT:
SPEC.:	DIM.: 1203*52*31	SERIAL No.:
MFR.:	SUR.:0.8*0.042	Shielding Angle:

pcc	80%			70%			50%			30%			10%			0
pw	50%	30%	10%	50%	30%	10%	50%	30%	10%	50%	30%	10%	50%	30%	10%	0
pfc	20%			20%			20%			20%			20%			0
RCR	RCR:Room Cavity Ratio						Coefficients of Utilization(CU)									
0.0	1.01	1.01	1.01	.89	.89	.89	.68	.68	.68	.49	.49	.49	.31	.31	.31	.22
1.0	.89	.85	.82	.79	.76	.74	.61	.59	.57	.44	.43	.42	.28	.28	.28	.21
2.0	.78	.73	.69	.70	.66	.62	.54	.51	.49	.40	.38	.37	.26	.25	.25	.19
3.0	.70	.63	.58	.62	.57	.53	.49	.45	.42	.36	.34	.32	.24	.23	.22	.17
4.0	.62	.55	.50	.56	.50	.45	.44	.40	.37	.33	.30	.28	.22	.21	.20	.16
5.0	.56	.49	.43	.50	.44	.40	.40	.35	.32	.30	.27	.25	.20	.19	.18	.14
6.0	.50	.43	.38	.45	.39	.35	.36	.32	.28	.27	.24	.22	.19	.17	.16	.13
7.0	.46	.38	.33	.41	.35	.31	.33	.28	.25	.25	.22	.20	.17	.16	.15	.12
8.0	.41	.34	.30	.38	.31	.27	.30	.26	.23	.23	.20	.18	.16	.15	.14	.11
9.0	.38	.31	.26	.34	.28	.24	.28	.23	.20	.21	.18	.16	.15	.14	.12	.10
10.0	.35	.28	.24	.32	.26	.22	.25	.21	.18	.20	.17	.15	.14	.13	.11	.09



C Range: 0 - 360DEG  
C Interval: 5.0DEG  
Test Speed: MEDIUM  
Temperature:25.3DEG  
Operators:  
Test Date:2025-04-02

γ Range: 0 - 180DEG  
γ Interval: 0.5DEG  
Test System:EVERFINE GO-2000\_V1 SYSTEM V2.0.406.10  
Humidity:65.0%  
Test Distance:11.700m [K=0.8547]  
Remarks:

## WEC AND CCEC

Test:U:229.62V I:0.3546A P:79.622W PF:0.9778 Freq:49.99Hz Lamp Flux:9563.58x1 lm								
NAME:			TYPE:			WEIGHT:		
SPEC.:			DIM.: 1203*52*31			SERIAL No.:		
MFR.:			SUR.:0.8*0.042			Shielding Angle:		

pcc	80%			70%			50%			30%			10%			0
pw	50%	30%	10%	50%	30%	10%	50%	30%	10%	50%	30%	10%	50%	30%	10%	0
pfc	20%			20%			20%			20%			20%			0
RCR	RCR:Room Cavity Ratio						Wall Exitance Coefficients(WEC)									
0.0																
1.0	.244	.139	.044	.214	.122	.039	.157	.090	.029	.104	.060	.019	.056	.033	.011	
2.0	.226	.124	.038	.199	.110	.034	.147	.082	.025	.099	.056	.017	.055	.031	.010	
3.0	.211	.112	.034	.185	.099	.030	.138	.075	.023	.094	.051	.016	.053	.029	.009	
4.0	.196	.102	.030	.173	.091	.027	.129	.069	.020	.089	.048	.014	.051	.027	.008	
5.0	.184	.094	.027	.162	.083	.024	.122	.063	.019	.084	.044	.013	.048	.026	.008	
6.0	.172	.086	.025	.152	.077	.022	.114	.059	.017	.079	.041	.012	.046	.024	.007	
7.0	.161	.080	.023	.143	.071	.020	.108	.055	.016	.075	.038	.011	.044	.023	.007	
8.0	.152	.074	.021	.135	.066	.019	.102	.051	.015	.071	.036	.010	.042	.022	.006	
9.0	.143	.069	.019	.127	.062	.017	.097	.048	.014	.068	.034	.010	.040	.021	.006	
10.0	.136	.065	.018	.120	.058	.016	.092	.045	.013	.064	.032	.009	.039	.020	.006	

pcc	80%			70%			50%			30%			10%			0
pw	50%	30%	10%	50%	30%	10%	50%	30%	10%	50%	30%	10%	50%	30%	10%	0
pfc	20%			20%			20%			20%			20%			0
RCR	RCR:Room Cavity Ratio						Ceiling Cavity Exitance Coefficients(CCEC)									
0.0	.782	.782	.782	.669	.669	.669	.456	.456	.456	.262	.262	.262	.084	.084	.084	
1.0	.772	.753	.736	.661	.647	.634	.452	.445	.438	.260	.257	.255	.083	.083	.082	
2.0	.764	.733	.707	.655	.631	.611	.449	.436	.426	.259	.254	.250	.083	.082	.081	
3.0	.757	.718	.687	.649	.619	.595	.446	.430	.418	.257	.251	.246	.083	.082	.081	
4.0	.750	.706	.673	.644	.610	.584	.443	.425	.412	.256	.249	.243	.082	.081	.080	
5.0	.744	.697	.663	.639	.603	.577	.440	.422	.407	.255	.248	.242	.082	.081	.080	
6.0	.739	.690	.656	.635	.598	.571	.438	.419	.404	.254	.246	.240	.082	.080	.079	
7.0	.733	.685	.650	.631	.593	.567	.436	.416	.402	.253	.245	.239	.082	.080	.079	
8.0	.728	.680	.646	.627	.590	.563	.434	.414	.400	.252	.244	.238	.082	.080	.079	
9.0	.724	.676	.643	.623	.586	.561	.432	.412	.398	.252	.243	.238	.081	.080	.079	
10.0	.719	.672	.641	.620	.584	.559	.430	.411	.397	.251	.243	.237	.081	.080	.079	

C Range: 0 - 360DEG  
 C Interval: 5.0DEG  
 Test Speed: MEDIUM  
 Temperature:25.3DEG  
 Operators:  
 Test Date:2025-04-02

γ Range: 0 - 180DEG  
 γ Interval: 0.5DEG  
 Test System:EVERFINE GO-2000\_V1 SYSTEM V2.0.406.10  
 Humidity:65.0%  
 Test Distance:11.700m [K=0.8547]  
 Remarks:

UGR(Unified Glare Rating) Table

Test:U:229.62V I:0.3546A P:79.622W PF:0.9778 Freq:49.99Hz Lamp Flux:9563.58x1 lm											
NAME:					TYPE:			WEIGHT:			
SPEC.:					DIM.: 1203*52*31			SERIAL No.:			
MFR.:					SUR.:0.8*0.042			Shielding Angle:			
ceiling/cavity	0.7	0.7	0.5	0.5	0.3	0.7	0.7	0.5	0.5	0.3	
walls	0.5	0.3	0.5	0.3	0.3	0.5	0.3	0.5	0.3	0.3	
working plane	0.2	0.2	0.2	0.2	0.2	0.2	0.2	0.2	0.2	0.2	
Room dimensions		Viewed crosswise					Viewed endwise				
x = 2H y = 2H	12.3	13.0	13.4	14.1	15.6	11.6	12.3	12.7	13.4	14.9	
	3H	12.0	12.6	13.1	13.7	15.2	11.3	11.9	12.4	13.0	14.5
	4H	11.8	12.3	12.9	13.4	15.0	11.1	11.6	12.2	12.7	14.3
	6H	11.6	12.1	12.7	13.2	14.8	10.9	11.4	12.0	12.5	14.1
	8H	11.5	12.0	12.6	13.1	14.6	10.8	11.3	11.9	12.4	13.9
	12H	11.4	11.8	12.5	13.0	14.5	10.7	11.1	11.8	12.3	13.8
4H	2H	11.8	12.4	12.9	13.5	15.0	11.1	11.7	12.2	12.8	14.3
	3H	11.4	11.9	12.6	13.0	14.6	10.7	11.2	11.9	12.3	13.9
	4H	11.2	11.6	12.4	12.7	14.3	10.5	10.9	11.7	12.1	13.6
	6H	11.0	11.3	12.2	12.5	14.1	10.3	10.6	11.5	11.8	13.4
	8H	10.9	11.2	12.1	12.4	14.0	10.2	10.5	11.4	11.7	13.3
	12H	10.8	11.1	12.0	12.2	13.9	10.1	10.4	11.3	11.5	13.2
8H	4H	10.9	11.2	12.1	12.4	14.0	10.2	10.5	11.4	11.7	13.3
	6H	10.7	10.9	11.9	12.1	13.7	10.0	10.2	11.2	11.4	13.0
	8H	10.5	10.8	11.8	12.0	13.6	9.9	10.1	11.1	11.3	12.9
	12H	10.4	10.6	11.7	11.8	13.5	9.7	9.9	10.9	11.1	12.8
12H	4H	10.8	11.1	12.0	12.2	13.9	10.1	10.4	11.3	11.5	13.2
	6H	10.5	10.8	11.7	12.0	13.6	9.9	10.1	11.1	11.3	12.9
	8H	10.4	10.6	11.6	11.8	13.5	9.7	9.9	11.0	11.1	12.8
Variations with the observer position at spacings:											
S = 1.0H	+ 2.5 / -10.3					+ 2.5 / -10.9					
1.5H	+ 3.9 / - 7.5					+ 4.0 / - 7.3					
2.0H	+ 6.7 / -10.1					+ 6.1 / - 9.9					

CIE Pub.117, 9564 lm Total Lamp Luminous Flux Corrected ( $8\log(F/F_0) = 7.8$ )

C Range: 0 - 360DEG  
 C Interval: 5.0DEG  
 Test Speed: MEDIUM  
 Temperature:25.3DEG  
 Operators:  
 Test Date:2025-04-02

γ Range: 0 - 180DEG  
 γ Interval: 0.5DEG  
 Test System:EVERFINE GO-2000\_V1 SYSTEM V2.0.406.10  
 Humidity:65.0%  
 Test Distance:11.700m [K=0.8547]  
 Remarks:

## UTILIZATION FACTORS TABLE

Test:U:229.62V I:0.3546A P:79.622W PF:0.9778 Freq:49.99Hz Lamp Flux:9563.58x1 lm		
NAME:	TYPE:	WEIGHT:
SPEC.:	DIM.: 1203*52*31	SERIAL No.:
MFR.:	SUR.:0.8*0.042	Shielding Angle:

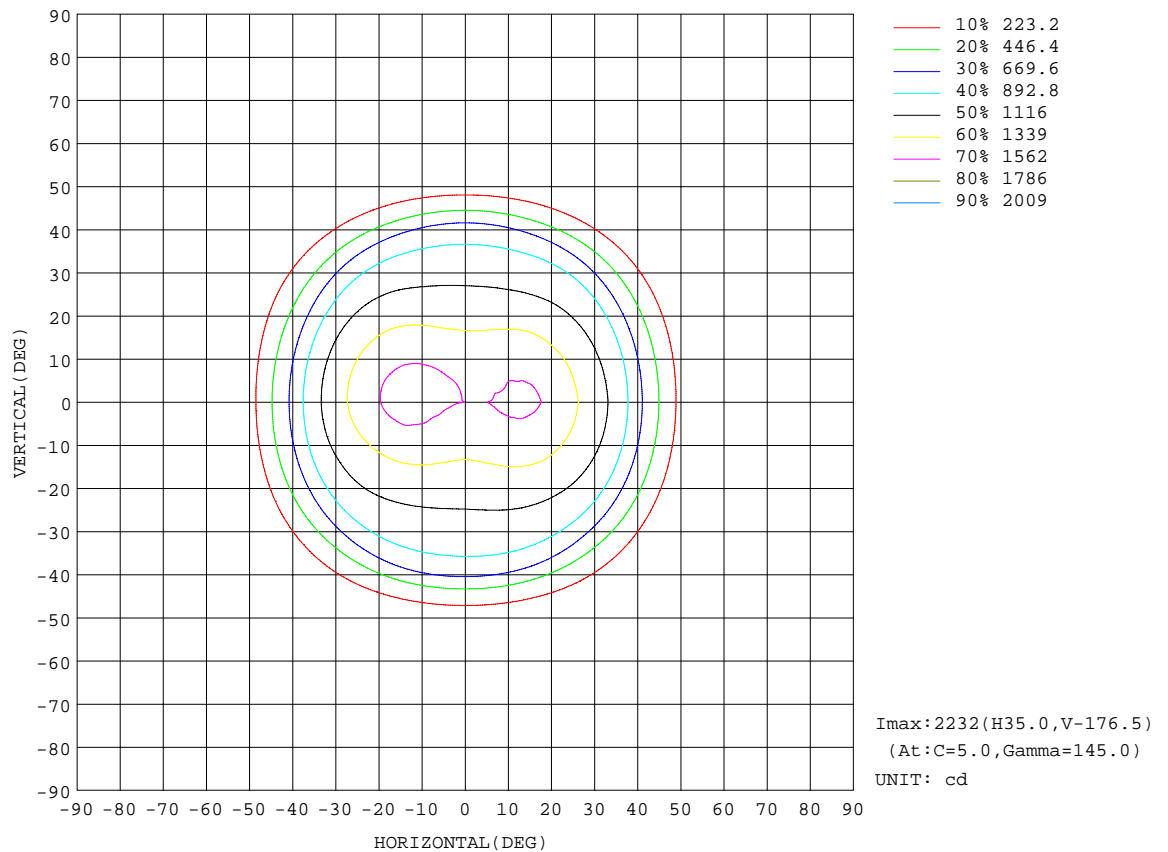
REFLECTANCE										
Ceiling	0.8	0.8	0.8	0.7	0.7	0.7	0.5	0.5	0.5	0
Walls	0.7	0.5	0.3	0.7	0.5	0.3	0.7	0.5	0.3	0
Working plane	0.2	0.2	0.2	0.2	0.2	0.2	0.2	0.2	0.2	0
ROOM INDEX	UTILIZATION FACTORS(PERCENT) $k(RI) \times RCR = 5$									
$k = 0.60$	41	31	25	37	29	24	32	25	21	14
0.80	49	39	32	45	36	30	38	31	27	16
1.00	56	45	39	51	42	36	42	35	31	17
1.25	63	52	45	57	48	42	46	40	35	19
1.50	68	57	50	61	52	46	49	43	39	19
2.00	74	65	58	67	59	53	53	47	43	20
2.50	79	70	64	70	63	58	55	51	47	20
3.00	82	74	68	73	67	62	57	53	50	21
4.00	86	80	75	77	72	67	60	56	53	21
5.00	89	83	79	79	75	71	61	58	56	22
ROOM INDEX	UF(total)									Direct
According to DIN EN 13032-2 2004			Suspended					SHRNOM = 1.25		

C Range: 0 - 360DEG  
 C Interval: 5.0DEG  
 Test Speed: MEDIUM  
 Temperature:25.3DEG  
 Operators:  
 Test Date:2025-04-02

$\gamma$  Range: 0 - 180DEG  
 $\gamma$  Interval: 0.5DEG  
 Test System:EVERFINE GO-2000\_V1 SYSTEM V2.0.406.10  
 Humidity:65.0%  
 Test Distance:11.700m [K=0.8547]  
 Remarks:

## ISOCANDELA DIAGRAM

Test:U:229.62V I:0.3546A P:79.622W PF:0.9778 Freq:49.99Hz Lamp Flux:9563.58x1 lm		
NAME:	TYPE:	WEIGHT:
SPEC.:	DIM.: 1203*52*31	SERIAL No.:
MFR.:	SUR.:0.8*0.042	Shielding Angle:



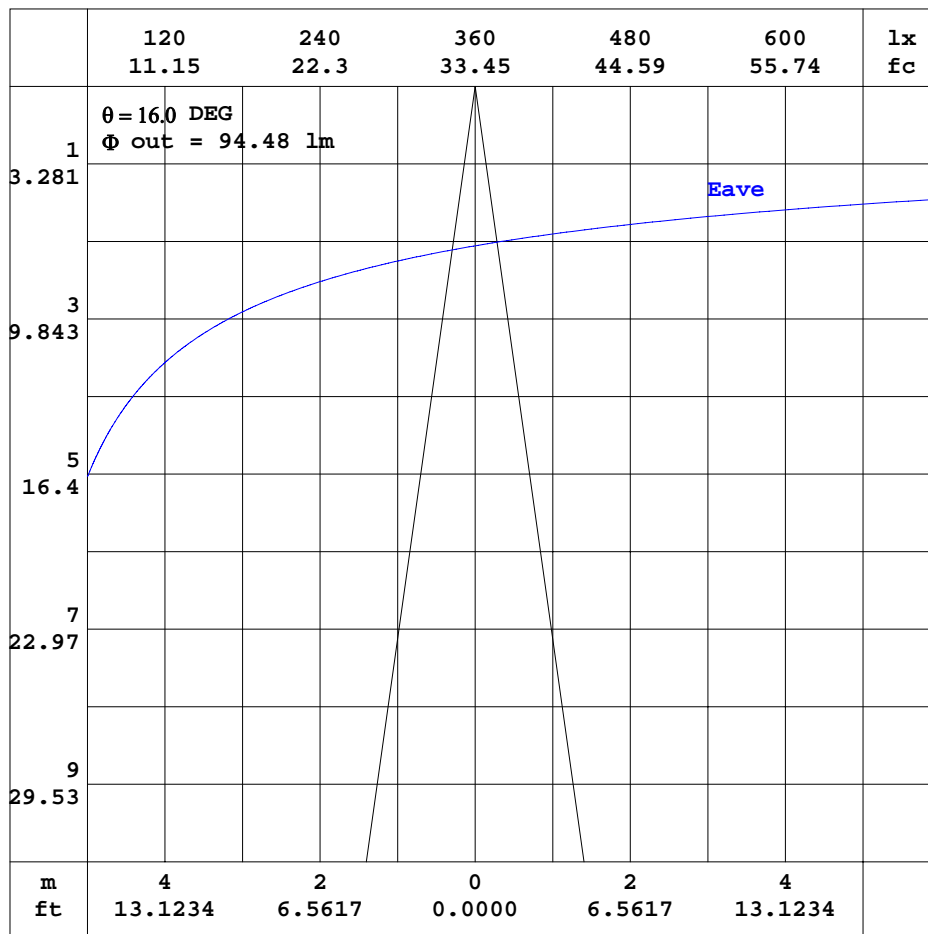
C Range: 0 - 360DEG  
C Interval: 5.0DEG  
Test Speed: MEDIUM  
Temperature:25.3DEG  
Operators:  
Test Date:2025-04-02

$\gamma$  Range: 0 - 180DEG  
 $\gamma$  Interval: 0.5DEG  
Test System:EVERFINE GO-2000\_V1 SYSTEM V2.0.406.10  
Humidity:65.0%  
Test Distance:11.700m [K=0.8547]  
Remarks:



## AAI CURVES

Test:U:229.62V I:0.3546A P:79.622W PF:0.9778 Freq:49.99Hz Lamp Flux:9563.58x1 lm		
NAME:	TYPE:	WEIGHT:
SPEC.:	DIM.: 1203*52*31	SERIAL No.:
MFR.:	SUR.:0.8*0.042	Shielding Angle:



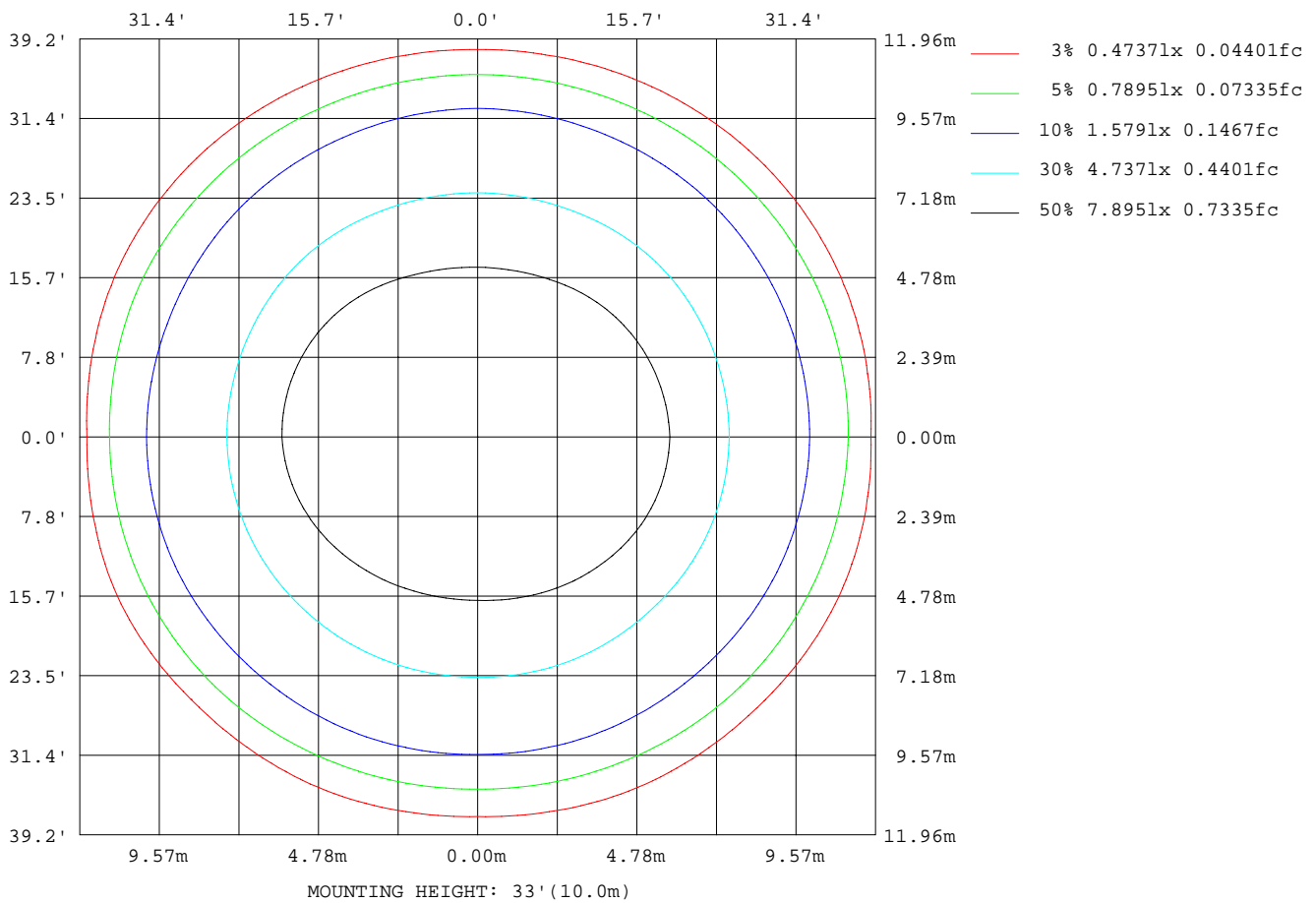
Note:The Curves indicate the illuminated area and the average illumination when the luminaire is at different distance.

C Range: 0 - 360DEG  
C Interval: 5.0DEG  
Test Speed: MEDIUM  
Temperature:25.3DEG  
Operators:  
Test Date:2025-04-02

$\gamma$  Range: 0 - 180DEG  
 $\gamma$  Interval: 0.5DEG  
Test System:EVERFINE GO-2000\_V1 SYSTEM V2.0.406.10  
Humidity:65.0%  
Test Distance:11.700m [K=0.8547]  
Remarks:

## ISOLUX DIAGRAM

Test:U:229.62V I:0.3546A P:79.622W PF:0.9778 Freq:49.99Hz Lamp Flux:9563.58x1 lm		
NAME:	TYPE:	WEIGHT:
SPEC.:	DIM.: 1203*52*31	SERIAL No.:
MFR.:	SUR.:0.8*0.042	Shielding Angle:



C Range: 0 - 360DEG  
C Interval: 5.0DEG  
Test Speed: MEDIUM  
Temperature: 25.3DEG  
Operators:  
Test Date: 2025-04-02

$\gamma$  Range: 0 - 180DEG  
 $\gamma$  Interval: 0.5DEG  
Test System: EVERFINE GO-2000\_V1 SYSTEM V2.0.406.10  
Humidity: 65.0%  
Test Distance: 11.700m [K=0.8547]  
Remarks:

## LED Avg.L Report

Test:U:229.62V I:0.3546A P:79.622W PF:0.9778 Freq:49.99Hz Lamp Flux:9563.58x1 lm		
NAME:	TYPE:	WEIGHT:
SPEC.:	DIM.: 1203*52*31	SERIAL No.:
MFR.:	SUR.:0.8*0.042	Shielding Angle:

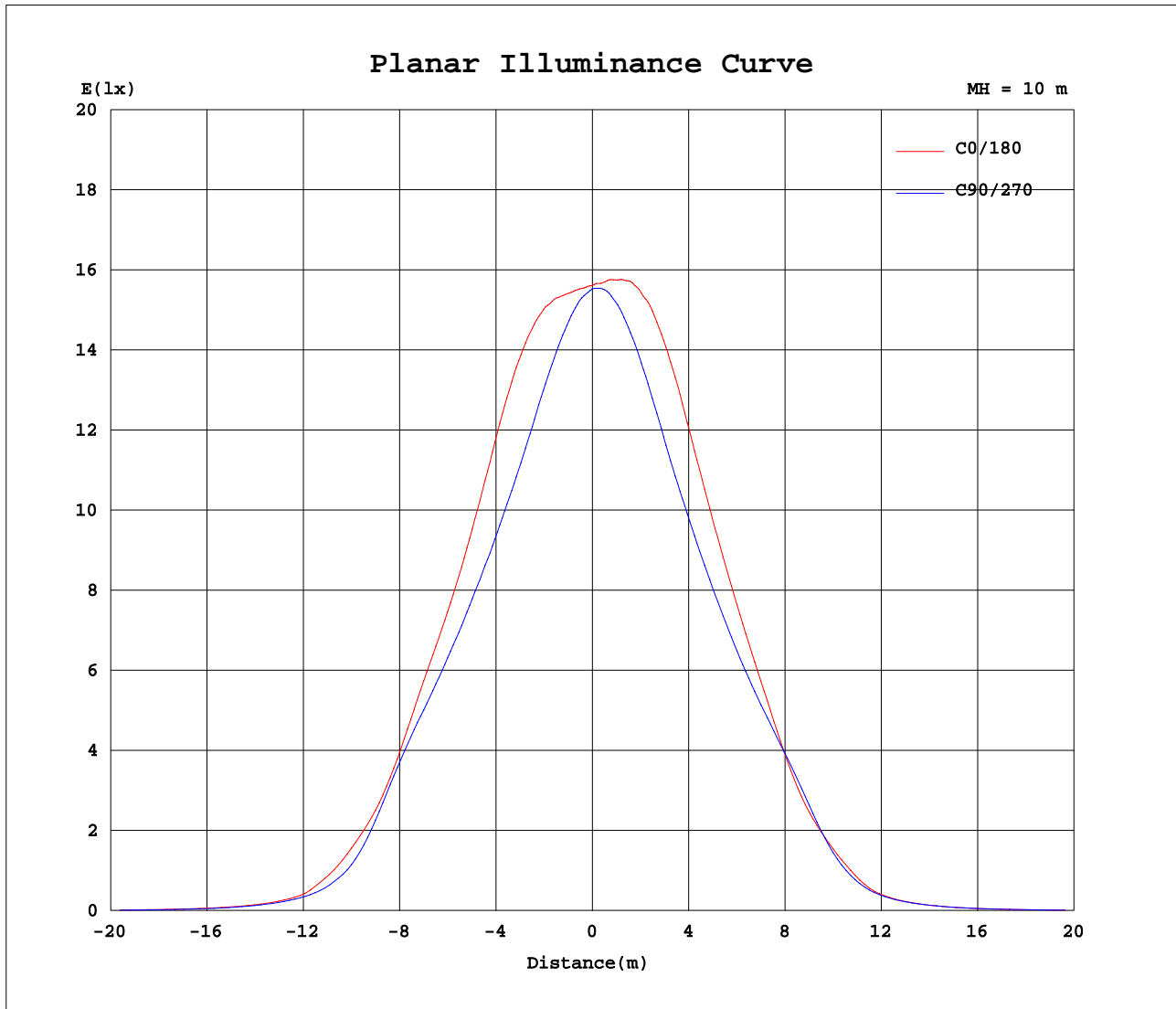
AvgL	cd/m2
L_0~180(65)av	588
L_0~180(75)av	149
L_0~180(85)av	658
L_90~270(65)av	510
L_90~270(75)av	40
L_90~270(85)av	55
L_45(65)av	850
L_45(75)av	81
L_45(85)av	528

Standard: GB/T 29293-2012

C Range: 0 - 360DEG  
C Interval: 5.0DEG  
Test Speed: MEDIUM  
Temperature:25.3DEG  
Operators:  
Test Date:2025-04-02

$\gamma$  Range: 0 - 180DEG  
 $\gamma$  Interval: 0.5DEG  
Test System:EVERFINE GO-2000\_V1 SYSTEM V2.0.406.10  
Humidity:65.0%  
Test Distance:11.700m [K=0.8547]  
Remarks:

## Planar Illuminance Curve



C Range: 0 - 360DEG  
C Interval: 5.0DEG  
Test Speed: MEDIUM  
Temperature: 25.3DEG  
Operators:  
Test Date: 2025-04-02

$\gamma$  Range: 0 - 180DEG  
 $\gamma$  Interval: 0.5DEG  
Test System: EVERFINE GO-2000\_V1 SYSTEM V2.0.406.10  
Humidity: 65.0%  
Test Distance: 11.700m [K=0.8547]  
Remarks:

## LUMINOUS DISTRIBUTION INTENSITY DATA

Test:U:229.62V I:0.3546A P:79.622W PF:0.9778 Freq:49.99Hz Lamp Flux:9563.58x1 lm																	
NAME:									TYPE:						WEIGHT:		
SPEC.:									DIM.: 1203*52*31						SERIAL No.:		
MFR.:									SUR.:0.8*0.042						Shielding Angle:		

Table--1

UNIT: cd

C(DEG) γ (DEG)	0	5	10	15	20	25	30	35	40	45	50	55	60	65	70	75	80	85	90
0	1561	1560	1560	1559	1559	1558	1557	1556	1555	1554	1554	1554	1555	1555	1555	1555	1555	1554	1553
5	1562	1559	1556	1553	1549	1545	1541	1536	1532	1527	1523	1519	1515	1511	1509	1506	1504	1503	1503
10	1587	1581	1575	1567	1558	1547	1534	1521	1507	1494	1480	1466	1454	1442	1432	1424	1418	1414	1412
15	1588	1578	1567	1554	1538	1521	1501	1480	1458	1436	1415	1394	1374	1355	1339	1325	1314	1306	1302
20	1520	1510	1497	1483	1466	1446	1423	1399	1373	1348	1324	1301	1279	1259	1242	1227	1216	1208	1203
25	1377	1369	1358	1346	1331	1314	1293	1272	1250	1229	1208	1189	1171	1155	1141	1130	1121	1115	1112
30	1217	1211	1204	1195	1184	1171	1156	1139	1122	1106	1091	1077	1064	1053	1043	1035	1029	1024	1022
35	1044	1041	1035	1029	1021	1011	998	986	973	961	953	946	939	934	928	923	918	914	912
40	741	739	736	733	729	724	718	712	706	702	701	702	704	705	706	704	703	702	701
45	441	438	434	428	422	414	404	394	384	374	366	360	353	348	342	336	330	327	325
50	163	168	171	173	174	173	170	166	162	157	155	153	151	149	147	143	139	137	135
55	67.9	69.9	71.6	72.9	73.9	74.5	74.9	74.9	74.6	73.9	72.6	71.0	69.2	67.3	65.3	63.3	61.6	60.1	59.2
60	27.7	28.1	28.6	29.1	29.7	30.6	31.8	32.8	33.5	33.8	32.7	31.2	29.5	27.7	26.1	24.9	23.9	23.1	22.6
65	9.32	9.57	9.85	10.2	10.5	11.0	11.6	12.1	12.4	12.6	12.0	11.2	10.3	9.32	8.51	7.90	7.39	7.02	6.79
70	2.77	2.97	3.13	3.26	3.37	3.45	3.51	3.53	3.50	3.44	3.26	3.05	2.82	2.58	2.34	2.12	1.94	1.79	1.69
75	1.00	1.12	1.20	1.26	1.27	1.25	1.18	1.10	1.00	0.89	0.83	0.76	0.69	0.62	0.52	0.41	0.30	0.20	0.14
80	1.50	1.77	1.97	2.08	2.12	2.06	1.89	1.68	1.43	1.17	0.93	0.71	0.50	0.32	0.20	0.14	0.11	0.10	0.11
85	1.90	2.14	2.32	2.44	2.49	2.47	2.37	2.22	2.03	1.81	1.55	1.28	1.00	0.74	0.53	0.37	0.24	0.16	0.11
90	2.21	2.54	2.82	3.05	3.23	3.37	3.46	3.49	3.45	3.32	3.00	2.62	2.19	1.74	1.31	0.92	0.58	0.30	10.4
95	278	319	356	389	417	447	477	497	504	494	428	350	265	182	123	88.9	66.5	54.4	51.8
100	847	885	914	936	950	965	977	975	952	904	772	621	465	317	212	158	125	110	111
105	1304	1331	1345	1347	1338	1321	1296	1254	1193	1109	950	777	602	438	319	250	207	185	184
110	1626	1652	1662	1655	1632	1593	1539	1467	1375	1264	1093	912	731	562	436	357	304	276	270
115	1871	1870	1857	1831	1792	1744	1685	1611	1519	1407	1235	1051	868	696	565	478	418	384	375
120	1965	1952	1930	1901	1862	1822	1777	1718	1642	1545	1376	1195	1011	837	702	612	548	510	499
125	2006	1998	1982	1959	1929	1898	1865	1818	1754	1667	1505	1329	1149	977	843	753	689	650	638
130	2064	2065	2056	2040	2014	1986	1954	1907	1844	1760	1607	1441	1271	1110	984	898	836	800	788
135	2135	2141	2136	2121	2096	2065	2026	1974	1907	1822	1681	1529	1376	1231	1118	1040	985	952	942
140	2199	2205	2200	2184	2156	2119	2072	2012	1939	1854	1728	1596	1464	1341	1244	1178	1131	1104	1096
145	2229	2232	2224	2206	2176	2133	2079	2015	1941	1859	1753	1644	1538	1439	1361	1308	1270	1248	1241
150	2209	2208	2197	2176	2145	2102	2047	1985	1917	1843	1760	1678	1598	1525	1468	1427	1398	1381	1376
155	2136	2131	2118	2098	2071	2033	1987	1935	1880	1822	1762	1704	1649	1599	1559	1531	1510	1498	1494
160	2027	2021	2010	1994	1974	1948	1915	1879	1841	1803	1765	1728	1693	1662	1637	1618	1605	1597	1594
165	1916	1912	1905	1897	1885	1870	1851	1831	1810	1789	1768	1747	1729	1712	1698	1688	1680	1675	1673
170	1835	1832	1829	1825	1820	1814	1806	1798	1790	1781	1772	1763	1754	1746	1740	1736	1733	1731	1731
175	1788	1787	1787	1786	1785	1784	1782	1781	1779	1777	1775	1772	1769	1767	1766	1765	1764	1764	1764
180	1773	1773	1773	1773	1773	1773	1773	1773	1773	1773	1773	1773	1773	1773	1773	1773	1773	1773	1773

C Range: 0 - 360DEG  
C Interval: 5.0DEG  
Test Speed: MEDIUM  
Temperature:25.3DEG  
Operators:  
Test Date:2025-04-02

γ Range: 0 - 180DEG  
γ Interval: 0.5DEG  
Test System:EVERFINE GO-2000\_V1 SYSTEM V2.0.406.10  
Humidity:65.0%  
Test Distance:11.700m [K=0.8547]  
Remarks:

## LUMINOUS DISTRIBUTION INTENSITY DATA

Test:U:229.62V I:0.3546A P:79.622W PF:0.9778 Freq:49.99Hz Lamp Flux:9563.58x1 lm																		
NAME:									TYPE:					WEIGHT:				
SPEC.:									DIM.: 1203*52*31					SERIAL No.:				
MFR.:									SUR.:0.8*0.042					Shielding Angle:				

Table--2

UNIT: cd

C(DEG) γ (DEG)	95	100	105	110	115	120	125	130	135	140	145	150	155	160	165	170	175	180	185
0	1552	1550	1548	1547	1546	1546	1547	1547	1547	1546	1546	1545	1545	1547	1550	1554	1558	1561	1561
5	1504	1506	1508	1512	1516	1520	1525	1530	1536	1540	1545	1550	1555	1562	1571	1579	1587	1594	1596
10	1414	1419	1426	1435	1446	1458	1472	1488	1504	1520	1536	1553	1569	1585	1601	1614	1626	1635	1637
15	1305	1312	1322	1336	1352	1370	1391	1413	1437	1463	1489	1515	1541	1564	1586	1605	1620	1630	1633
20	1204	1209	1217	1228	1244	1263	1284	1308	1333	1359	1386	1413	1440	1468	1495	1519	1539	1554	1557
25	1112	1116	1122	1131	1143	1157	1173	1192	1212	1234	1257	1281	1306	1331	1356	1379	1399	1414	1417
30	1022	1025	1030	1036	1046	1057	1070	1085	1101	1118	1136	1154	1172	1190	1209	1225	1239	1249	1251
35	912	914	917	922	927	934	942	950	960	970	981	992	1003	1013	1022	1030	1037	1042	1042
40	703	706	708	711	712	711	709	708	707	710	712	715	719	721	723	724	725	727	727
45	327	332	337	344	350	357	364	371	379	389	399	408	417	424	428	432	434	435	435
50	136	139	142	146	148	150	151	153	155	159	163	167	170	170	167	164	161	159	162
55	59.7	60.8	62.2	63.9	65.6	67.2	68.8	70.3	71.4	72.0	72.2	72.0	71.4	70.0	67.9	65.8	64.0	62.6	63.2
60	22.8	23.3	24.0	25.0	26.4	28.2	29.8	31.2	32.2	31.6	30.5	29.1	27.6	26.3	25.3	24.4	23.7	23.3	23.3
65	6.86	7.08	7.42	7.87	8.50	9.27	10.00	10.6	11.1	10.8	10.3	9.76	9.12	8.57	8.15	7.80	7.54	7.38	7.44
70	1.73	1.81	1.94	2.09	2.27	2.45	2.62	2.77	2.89	2.91	2.88	2.82	2.73	2.58	2.38	2.19	2.02	1.90	1.95
75	0.16	0.21	0.28	0.35	0.41	0.46	0.50	0.57	0.65	0.80	0.97	1.14	1.31	1.44	1.54	1.60	1.62	1.59	1.41
80	0.10	0.10	0.11	0.13	0.13	0.12	0.16	0.28	0.51	1.19	1.93	2.65	3.28	3.55	3.44	3.20	2.86	2.47	2.19
85	0.03	0.02	0.09	0.25	0.66	1.29	1.97	2.63	3.23	3.51	3.67	3.72	3.66	3.47	3.14	2.76	2.36	1.96	1.70
90	0.08	0.16	0.33	0.60	1.07	1.70	2.33	2.89	3.32	3.18	2.89	2.51	2.08	1.72	1.48	1.25	1.06	0.89	0.77
95	57.7	71.1	91.0	116	151	193	233	268	293	282	262	234	203	174	150	128	113	104	116
100	110	123	154	205	302	441	583	715	823	824	797	752	697	658	638	623	613	609	612
105	188	211	255	321	433	585	744	900	1040	1104	1146	1169	1179	1182	1182	1177	1168	1159	1163
110	281	313	368	445	563	715	877	1038	1189	1286	1365	1425	1468	1491	1496	1490	1478	1462	1470
115	391	431	494	580	701	853	1014	1174	1327	1432	1520	1593	1651	1694	1723	1740	1746	1742	1734
120	518	563	631	722	847	999	1159	1316	1463	1554	1627	1685	1730	1772	1809	1837	1853	1858	1842
125	659	705	775	866	989	1140	1295	1448	1587	1664	1723	1766	1798	1827	1857	1878	1891	1894	1882
130	808	853	919	1006	1123	1265	1411	1554	1685	1758	1813	1853	1880	1904	1925	1939	1946	1945	1938
135	961	1001	1061	1140	1244	1371	1503	1632	1752	1825	1883	1928	1961	1986	2004	2015	2018	2015	2012
140	1112	1146	1197	1264	1353	1461	1574	1686	1792	1866	1928	1978	2019	2048	2068	2079	2083	2080	2076
145	1254	1281	1322	1377	1449	1536	1628	1721	1811	1880	1942	1995	2039	2072	2094	2107	2113	2111	2106
150	1385	1406	1437	1478	1533	1599	1669	1742	1813	1873	1927	1976	2018	2051	2074	2090	2098	2098	2092
155	1501	1515	1538	1567	1605	1651	1700	1752	1803	1851	1896	1937	1973	2001	2022	2036	2043	2044	2038
160	1598	1607	1621	1640	1665	1694	1727	1760	1795	1827	1858	1887	1913	1933	1949	1960	1966	1968	1962
165	1676	1681	1689	1699	1712	1729	1747	1765	1785	1804	1822	1839	1855	1867	1876	1883	1887	1887	1884
170	1731	1733	1736	1741	1746	1753	1761	1769	1777	1785	1794	1801	1808	1814	1819	1822	1824	1824	1822
175	1764	1764	1765	1766	1767	1769	1771	1773	1775	1776	1778	1780	1781	1782	1783	1783	1783	1783	1783
180	1773	1773	1773	1773	1773	1773	1773	1773	1773	1773	1773	1773	1773	1773	1773	1773	1773	1773	1773

C Range: 0 - 360DEG  
C Interval: 5.0DEG  
Test Speed: MEDIUM  
Temperature:25.3DEG  
Operators:  
Test Date:2025-04-02

γ Range: 0 - 180DEG  
γ Interval: 0.5DEG  
Test System:EVERFINE GO-2000\_V1 SYSTEM V2.0.406.10  
Humidity:65.0%  
Test Distance:11.700m [K=0.8547]  
Remarks:

## LUMINOUS DISTRIBUTION INTENSITY DATA

Test:U:229.62V I:0.3546A P:79.622W PF:0.9778 Freq:49.99Hz Lamp Flux:9563.58x1 lm																		
NAME:									TYPE:					WEIGHT:				
SPEC.:									DIM.: 1203*52*31					SERIAL No.:				
MFR.:									SUR.:0.8*0.042					Shielding Angle:				

Table--3

UNIT: cd

C(DEG) γ (DEG)	190	195	200	205	210	215	220	225	230	235	240	245	250	255	260	265	270	275	280
0	1561	1560	1559	1558	1557	1556	1555	1554	1554	1554	1555	1555	1555	1555	1555	1554	1553	1552	1550
5	1598	1598	1596	1594	1591	1587	1583	1578	1574	1569	1565	1561	1557	1554	1550	1547	1545	1543	1542
10	1635	1632	1626	1618	1609	1599	1587	1575	1561	1547	1533	1520	1509	1500	1493	1487	1483	1480	1480
15	1631	1625	1615	1602	1585	1567	1547	1525	1502	1478	1455	1434	1416	1402	1391	1383	1378	1378	1381
20	1554	1546	1533	1518	1499	1477	1454	1429	1402	1374	1348	1324	1303	1287	1275	1266	1262	1263	1269
25	1414	1407	1397	1383	1366	1347	1327	1304	1279	1254	1230	1207	1189	1177	1167	1161	1158	1158	1161
30	1249	1244	1236	1225	1212	1198	1181	1164	1145	1126	1107	1090	1076	1067	1060	1055	1052	1051	1053
35	1041	1039	1035	1030	1024	1018	1011	1002	991	979	967	957	948	943	939	937	936	935	937
40	728	730	731	735	740	746	751	755	756	757	756	756	757	759	761	763	765	763	761
45	434	432	430	429	428	427	426	424	420	416	412	409	407	406	407	407	408	407	406
50	166	171	176	179	179	179	177	175	173	170	166	163	159	156	153	151	150	151	153
55	64.4	66.0	67.9	70.1	72.3	74.2	75.7	76.6	75.2	73.1	70.7	68.2	66.1	64.7	63.5	62.8	62.4	62.9	63.8
60	23.6	24.2	25.1	26.7	28.9	31.0	32.8	34.1	33.1	31.4	29.5	27.5	26.0	25.1	24.5	24.1	24.0	24.2	24.6
65	7.63	7.92	8.31	8.92	9.70	10.4	11.1	11.5	11.1	10.5	9.79	9.04	8.47	8.12	7.88	7.74	7.70	7.78	7.98
70	2.06	2.20	2.37	2.54	2.70	2.85	2.96	3.02	2.92	2.78	2.61	2.43	2.28	2.17	2.09	2.04	2.03	2.10	2.21
75	1.19	0.96	0.74	0.60	0.56	0.54	0.53	0.53	0.46	0.38	0.32	0.27	0.28	0.34	0.42	0.49	0.55	0.50	0.43
80	1.90	1.62	1.34	1.09	0.85	0.65	0.47	0.33	0.25	0.21	0.18	0.18	0.17	0.16	0.16	0.16	0.16	0.17	0.18
85	1.47	1.26	1.08	0.91	0.75	0.61	0.48	0.38	0.31	0.25	0.21	0.19	0.18	0.18	0.19	0.20	0.22	0.21	0.20
90	0.67	0.59	0.54	0.50	0.47	0.46	0.44	0.43	0.39	0.35	0.31	0.28	0.26	0.26	0.27	0.28	0.29	0.28	0.27
95	135	158	184	211	238	259	274	278	248	209	166	123	89.3	68.2	53.8	46.6	47.1	57.1	75.4
100	620	632	648	679	722	755	772	763	656	528	392	261	171	127	103	95.8	104	111	133
105	1165	1164	1157	1143	1120	1084	1031	959	821	671	520	378	276	218	183	168	173	184	214
110	1475	1472	1459	1425	1369	1297	1209	1104	955	798	643	499	391	324	279	257	257	273	311
115	1717	1689	1649	1597	1531	1451	1358	1249	1097	938	782	635	522	446	393	364	359	379	423
120	1815	1776	1729	1678	1625	1561	1483	1390	1242	1085	927	778	660	578	520	486	477	500	548
125	1860	1830	1792	1754	1714	1663	1598	1517	1376	1224	1070	924	806	722	661	623	612	635	685
130	1924	1903	1874	1842	1804	1756	1693	1615	1484	1342	1199	1061	950	869	810	773	760	783	830
135	2001	1984	1959	1926	1884	1831	1765	1686	1566	1437	1308	1185	1086	1013	959	926	914	933	975
140	2066	2048	2021	1984	1936	1877	1809	1731	1624	1513	1403	1299	1214	1151	1104	1075	1065	1081	1116
145	2094	2074	2045	2005	1954	1895	1828	1755	1665	1573	1483	1399	1330	1279	1242	1218	1210	1223	1251
150	2079	2058	2030	1991	1942	1888	1828	1765	1694	1622	1554	1490	1438	1399	1369	1351	1345	1354	1376
155	2025	2006	1981	1948	1908	1864	1816	1767	1715	1664	1615	1571	1534	1506	1485	1472	1467	1474	1490
160	1952	1937	1917	1893	1864	1833	1800	1766	1732	1698	1667	1638	1614	1596	1582	1574	1571	1577	1587
165	1878	1868	1857	1842	1824	1806	1786	1766	1746	1727	1709	1692	1679	1669	1661	1657	1656	1659	1665
170	1818	1813	1807	1800	1792	1784	1775	1766	1758	1749	1741	1734	1728	1724	1720	1719	1718	1720	1723
175	1782	1781	1780	1779	1777	1774	1772	1769	1767	1765	1763	1761	1760	1759	1758	1758	1758	1759	1760
180	1773	1773	1773	1773	1773	1773	1773	1773	1773	1773	1773	1773	1773	1773	1773	1773	1773	1773	1773

C Range: 0 - 360DEG  
C Interval: 5.0DEG  
Test Speed: MEDIUM  
Temperature:25.3DEG  
Operators:  
Test Date:2025-04-02

γ Range: 0 - 180DEG  
γ Interval: 0.5DEG  
Test System:EVERFINE GO-2000\_V1 SYSTEM V2.0.406.10  
Humidity:65.0%  
Test Distance:11.700m [K=0.8547]  
Remarks:

## LUMINOUS DISTRIBUTION INTENSITY DATA

Test:U:229.62V I:0.3546A P:79.622W PF:0.9778 Freq:49.99Hz Lamp Flux:9563.58x1 lm																	
NAME:									TYPE:						WEIGHT:		
SPEC.:									DIM.: 1203*52*31						SERIAL No.:		
MFR.:									SUR.:0.8*0.042						Shielding Angle:		

Table--4

UNIT: cd

C(DEG) γ (DEG)	285	290	295	300	305	310	315	320	325	330	335	340	345	350	355				
0	1548	1547	1546	1546	1547	1547	1547	1546	1546	1545	1545	1546	1548	1552	1556				
5	1541	1541	1541	1541	1542	1543	1544	1544	1545	1545	1546	1548	1551	1554	1558				
10	1481	1484	1490	1499	1508	1519	1529	1537	1544	1551	1557	1563	1570	1576	1581				
15	1388	1397	1410	1426	1443	1461	1480	1497	1514	1530	1544	1556	1567	1576	1583				
20	1278	1290	1306	1326	1347	1369	1391	1412	1431	1449	1466	1481	1493	1504	1513				
25	1167	1175	1188	1205	1223	1243	1263	1280	1298	1314	1329	1342	1353	1363	1371				
30	1056	1062	1072	1084	1098	1113	1128	1141	1153	1165	1176	1186	1195	1203	1210				
35	939	944	951	960	971	981	992	1000	1008	1015	1021	1027	1032	1037	1041				
40	758	756	755	757	759	760	761	758	754	750	746	743	742	741	741				
45	406	406	409	413	418	424	429	432	434	436	438	439	440	441	441				
50	155	158	161	164	167	170	173	175	176	177	178	177	175	172	168				
55	65.1	66.8	68.9	71.4	73.9	76.0	77.7	77.6	76.9	75.9	74.5	73.2	72.0	70.7	69.4				
60	25.3	26.3	28.0	30.2	32.3	34.2	35.6	34.8	33.6	32.0	30.3	29.1	28.4	28.0	27.8				
65	8.30	8.75	9.52	10.6	11.6	12.5	13.1	12.8	12.3	11.6	10.9	10.3	9.94	9.66	9.46				
70	2.36	2.53	2.75	3.01	3.26	3.47	3.64	3.61	3.53	3.41	3.27	3.15	3.05	2.96	2.87				
75	0.36	0.30	0.33	0.42	0.54	0.65	0.75	0.75	0.72	0.69	0.67	0.68	0.73	0.80	0.89				
80	0.20	0.22	0.25	0.29	0.33	0.39	0.46	0.54	0.64	0.74	0.86	0.98	1.10	1.23	1.36				
85	0.21	0.23	0.29	0.39	0.50	0.62	0.76	0.92	1.09	1.25	1.40	1.54	1.65	1.75	1.83				
90	0.28	0.31	0.39	0.51	0.66	0.81	0.97	1.10	1.22	1.35	1.47	1.61	1.75	1.90	2.05				
95	102	137	190	258	327	390	443	455	453	440	419	397	374	346	314				
100	171	229	329	467	611	749	871	917	939	944	935	925	915	899	877				
105	265	337	453	607	769	929	1077	1158	1218	1261	1289	1309	1324	1328	1321				
110	371	454	577	735	903	1071	1230	1339	1431	1506	1564	1607	1635	1648	1645				
115	491	581	710	872	1043	1214	1376	1487	1580	1659	1722	1775	1818	1848	1865				
120	620	716	848	1013	1185	1355	1513	1610	1689	1752	1802	1848	1889	1923	1948				
125	758	855	987	1150	1319	1485	1637	1723	1790	1841	1879	1914	1948	1974	1994				
130	900	992	1118	1273	1433	1591	1735	1818	1882	1930	1966	1997	2026	2046	2059				
135	1038	1121	1235	1376	1524	1669	1804	1888	1955	2008	2048	2081	2109	2127	2136				
140	1170	1241	1339	1462	1590	1719	1841	1925	1997	2056	2104	2142	2172	2191	2200				
145	1294	1352	1432	1532	1638	1746	1850	1931	2004	2067	2120	2163	2195	2216	2228				
150	1409	1454	1515	1590	1672	1756	1839	1912	1979	2040	2094	2137	2169	2191	2205				
155	1514	1546	1589	1641	1697	1757	1818	1875	1931	1983	2029	2067	2095	2116	2130				
160	1604	1625	1652	1684	1720	1758	1797	1836	1874	1911	1944	1972	1992	2009	2020				
165	1675	1687	1702	1721	1740	1761	1783	1805	1827	1848	1867	1883	1895	1904	1911				
170	1728	1734	1741	1749	1758	1767	1777	1787	1796	1805	1813	1819	1825	1829	1832				
175	1762	1763	1765	1767	1769	1771	1774	1776	1778	1780	1782	1784	1785	1786	1787				
180	1773	1773	1773	1773	1773	1773	1773	1773	1773	1773	1773	1773	1773	1773	1773				

C Range: 0 - 360DEG  
C Interval: 5.0DEG  
Test Speed: MEDIUM  
Temperature:25.3DEG  
Operators:  
Test Date:2025-04-02

γ Range: 0 - 180DEG  
γ Interval: 0.5DEG  
Test System:EVERFINE GO-2000\_V1 SYSTEM V2.0.406.10  
Humidity:65.0%  
Test Distance:11.700m [K=0.8547]  
Remarks: